

# SERVING WITH THE SHEAS

SERVING WITH SIM AND SIM-TEC

No. 8 :: AUGUST 2006

## A New Home, A New Name

We are excited about writing our first newsletter together! We had a wonderful wedding March 25<sup>th</sup>, and enjoyed a lovely honeymoon in the Dominican Republic town of Las Galeras.

The headline, *A New Home, A New Name*, refers both to our moving to a new place to live, and Cheri changing her name from "Patton" to "Shea". But it also refers to the hope we have of a new home and new name when we get to heaven. We don't want to

keep that hope to ourselves – everyone should have the opportunity to hear about and respond to the gift of salvation that brings that hope home.



Returning to reality after the honeymoon, Cheri finished up her twelfth year teaching at Lakewood Park Christian School.

Alan has been

working with SIM-TEC on a wiki website and giving technical support to folks in Liberia by telephone and over the internet. Alan also spent a weekend in June at the International Conference on Computing and Mission (ICCM) at Taylor University – where he had been introduced to Cheri one year ago! While there he gave a presentation on CAcert SSL certificates, which enable missionaries to secure email and websites for free.



Cheri has just completed two graduate courses this summer in order to keep her teaching license current, and has begun the process of joining SIM in order to join Alan as a missionary! In the meantime, we have both been busy serving in the Butler Church of the Nazarene, assisting with the music and youth programs there.

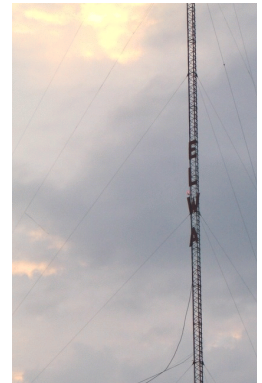
## Working with SIM-TEC

Alan is working with the SIM-TEC team as technical resource person, using his computer systems and the internet from home. SIM-TEC is an SIM ministry devoted to helping African churches establish Christian universities with culturally relevant curriculum that is written from a biblical worldview perspective.

The second week of July we drove to Charlotte, North Carolina, for three days of meetings with the SIM-TEC team. Interestingly, Cheri had previously been able to meet the SIM-TEC Director, Anthony Petrillo, when we were in Houghton, NY, for a family reunion in June. Since the July meetings, she has begun getting involved in SIM-TEC's curriculum writing process via conference calls and the internet, helping to influence curriculum development to have a biblical worldview perspective from its foundation. Her primary focus, however, will continue to be her second-grade classroom.

## News about Liberia

Anthony Petrillo and SIM-TEC had asked Alan to make a short trip to Liberia at the beginning of the summer, but it turned out to be too ambitious logistically given all the transitions in our lives at this point. It was disappointing not



to be able to revisit Alan's birthplace and where his parents served for many years, but we are eager to make this trip next summer. The purpose of the trip will be both to present SIM-TEC's vision and so that Cheri can observe the ELWA Academy; it will also help us be better prepared for long-term ministry there.

In the meantime, we continue to be involved with ELWA from here in Indiana! A few weeks ago Steve Kejr called Alan from Liberia asking for help with some equipment that Alan had recommended for the ELWA generators. Within the next few days, a lightning storm damaged Radio ELWA's transmitters. In addition to his work with SIM-TEC, since this call Alan has spent hours giving suggestions for improving transmitter and antenna grounding and researching equipment for the ELWA power system and generators.

## Support Needs

The combination of changes in SIM's support system and a drop-off in Alan's support since the closing of the International Christian Academy, where he previously served in Ivory Coast, has left us with a significant monthly shortfall. As a result, Alan is currently looking for some temporary work to help ends meet.

A support increase of \$800 per month will enable Alan to focus more fully on current projects for SIM-TEC, which is growing rapidly. Beyond that, we will continue to raise support in order to be able to go as a long-term couple to Liberia. We will need a total of \$2000 per month more than we are currently receiving before we can leave for the field. Please pray with us that the Lord would meet this need.



## Contact Information

Alan & Cheri Shea  
102 High St  
Butler, IN 46721  
USA

Alan Cell: +1 260-645-0663  
Cheri Cell: +1 260-645-0679  
Email: <[alan@shea.net](mailto:alan@shea.net)>  
<[cheri@shea.net](mailto:cheri@shea.net)>

SIM USA  
PO Box 7900  
Charlotte, NC 28241

Tel: +1 704-588-4300  
<http://www.sim.org>  
<http://simtec.sim.org>

Write us if you want more frequent updates by email.

## Please join us in thanks to God:

- ▶ The most joyous praise on our hearts right now is for our marriage, and for the opportunities for service that the Lord is opening up before us!
- ▶ Cheri is especially thankful that she was able to successfully complete her coursework this summer to renew her teaching license.

## Please join us in prayer:

- ▶ As Alan and Cheri continue to adjust to their new relationship – that the Lord would help them to lay a strong foundation now in preparation for future service.
- ▶ For Alan, as he continues to serve both SIM-TEC and ELWA long-distance.
- ▶ For Cheri, as she teaches second grade and gives input to the SIM-TEC Educational Team.
- ▶ God's provision for financial support.
- ▶ Planning a short term trip to Liberia.
- ▶ Please pray for ELWA's short-wave and FM transmitter repairs, and for protection from further damage so that the gospel may be broadcast to West Africa.

*We regard your partnering with us in ministry as crucial: Through your prayers and support, you are serving right alongside us in ministry!*